

SZABLONY KUBKI TERMICZNE AMERICANO

Ważne uwagi techniczne dotyczące kubków Brite Americano i Americano .

- Etykieta IML ze względów technologicznych nie styka się do końca między krawędziami. Z tego względu odległość etykiety od dolnej krawędzi kubka oraz pomiędzy bokami etykiety IML wynosi ok 2 mm.



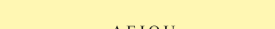


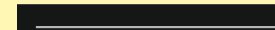




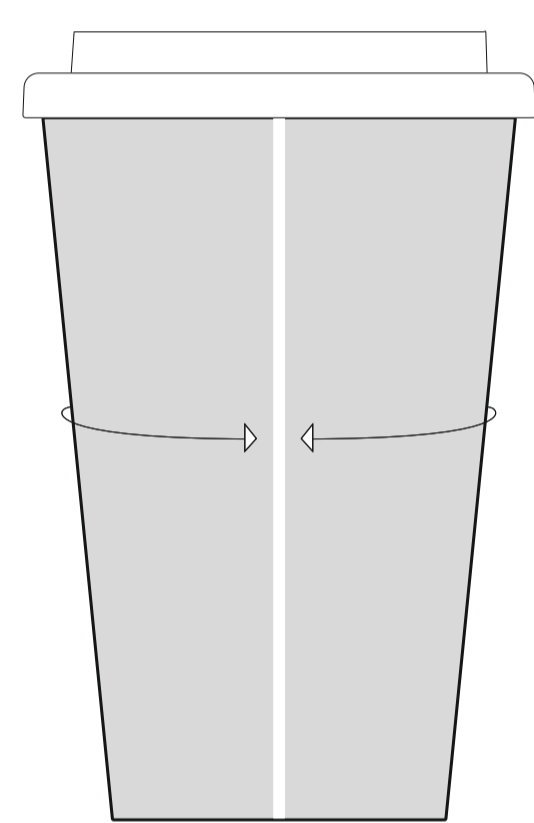
Nasza rada: Przerwa ta jest mniej widoczna przy użyciu białego tła etykiety.

- Ustnik do picia w pokrywce może być umieszczony w różnych miejscach w stosunku do projektu graficznego.

DR1413 - Brite-Americanano Mug

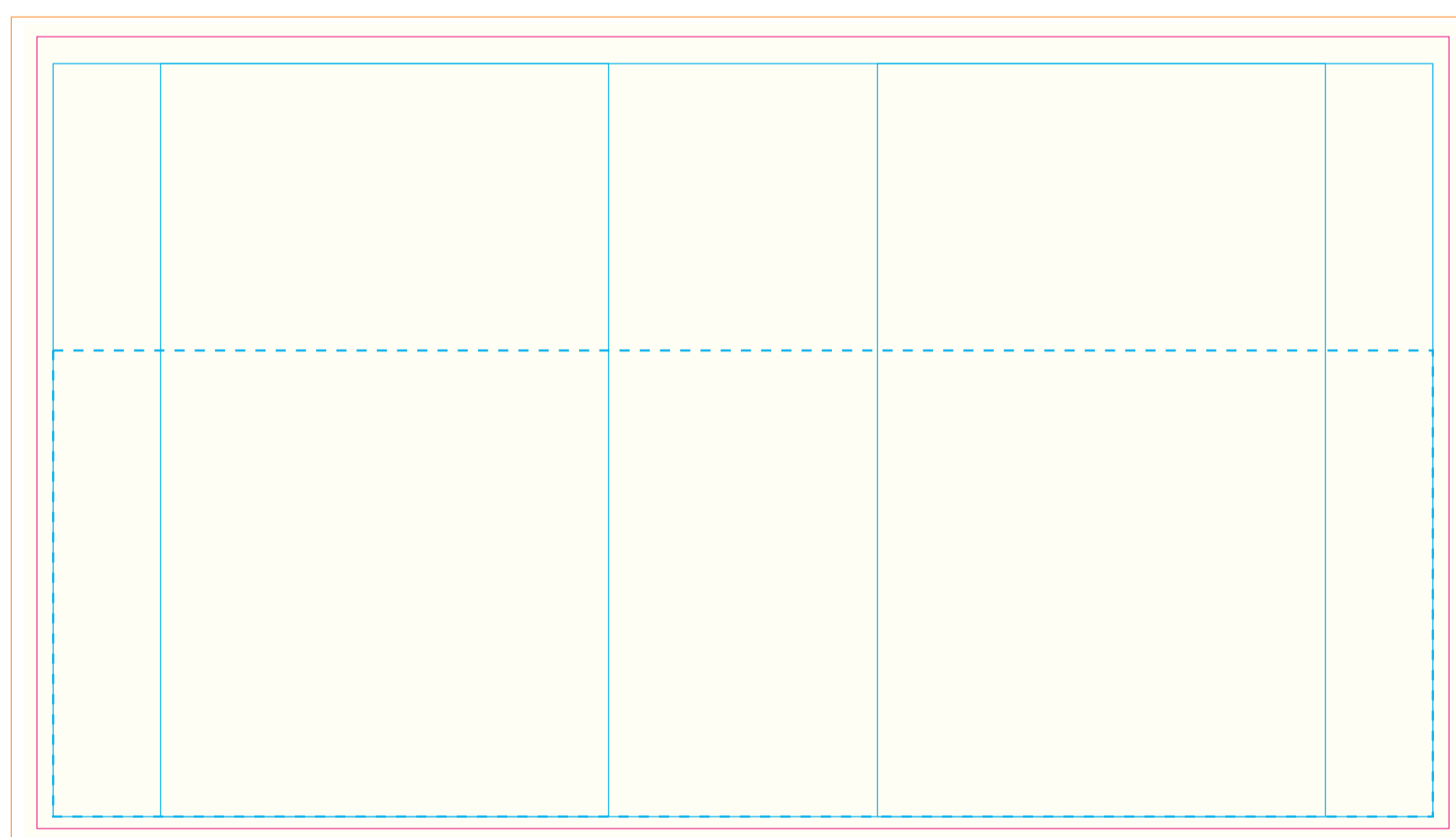
Product Dimension(mm): 95x154

Minimum Print Restrictions (Grip) Line thickness (0.3mm)  Reversed Line (0.3mm)  Text (6pt)  Reversed Text (10pt)  Any lines or text below these restrictions will result in a loss of detail when printed	Minimum Print Restrictions (Mug/Lid/Wrap) Line thickness (0.2mm)  Reversed Line (0.2mm)  Text (3pt)  Reversed Text (4pt)  Any lines or text below these restrictions will result in a loss of detail when printed	Actual Artwork Size(s): Mug = ----- Grip = ----- Lid = ----- CardWrap = -----	Please read carefully: The drinking spout of the lid may be in different positions in relation to your artwork across your mug order. Yellow tint is to show the effect of the lamination process. Please note 'white' will not be 'pure brilliant white'
--	---	--	---



There will be a 2mm (approx.) white gap between where the label finishes and begins.

Mug Print Area



Available Print Area(s):

- Bleed Boundary (Mug) = 245x139mm
- Max Print Area (Mug) = 236x132.5mm
- Text limit (Mug) = 231x126mm
- Text limit (Mug With Tyre Grip) = 231x78mm
- Bleed Boundary (DomedLid) = 44mm dia.
- Max Print Area (DomedLid) = 40mm dia.
- Text limit (DomedLid) = 36mm dia.
- Bleed Boundary (CardWrap) = 502x100mm
- Max Print Area (CardWrap) = 496x94mm
- Text limit (CardWrap) = 492x90mm
- Grip-Screen = 50x50mm

Notes For Artroom:

- If Artwork Contains a QR Code It Can Be No Larger Than 25x25mm
- To Step and Repeat Mug Artwork Onto Curved Guides = -174mm
- Only 1 Colour Print Is Available On The Grip
- **IMPORTANT:** Print colours available on the grip are:- Black, White, Silver, Cool Grey 6, Orange 021, Yellow 123 Green 355, Red 485, Blue 300, Reflex Blue and Purple 266
- If The Order is Having Print To The Lid, Please Make Sure The Lid Artwork Is Placed On 'Artwork Layer - Lid'.
- The Card Wraps Are Always Printed Process

DR1415 - Brite-Americano Grande -

Product Dimension(mm): 95x165

Minimum Print Restrictions (Mug/Lid)

Line thickness (0.2mm)

Reversed Line (0.2mm)

Text (3pt)

Reversed Text (4pt)



Any lines or text below these restrictions will result in a loss of detail when printed

Actual Artwork Size(s):

Mug = - - - - -

Lid = - - - - -

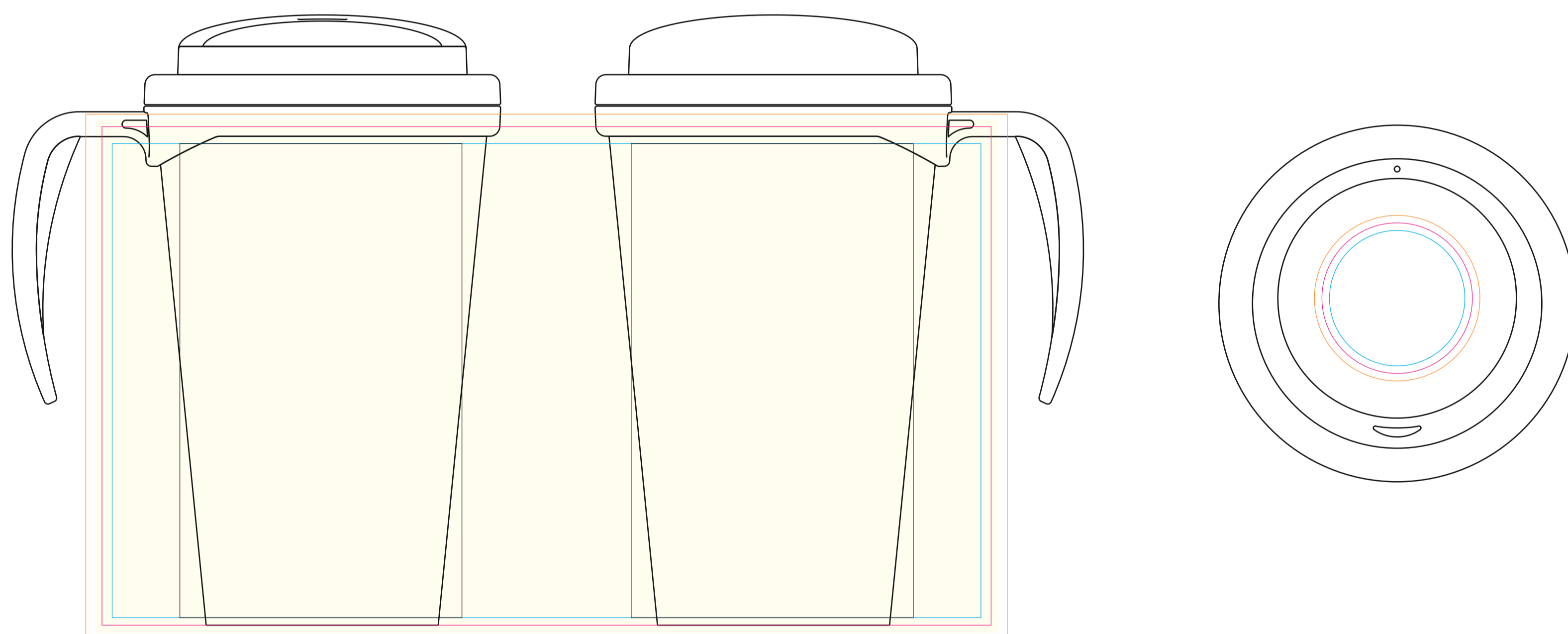
Please read carefully:

The drinking spout of the lid may be in different positions in relation to your artwork across your mug order.

The base and gap between where the label starts and finishes (approx 2mm) will be White.

• The gap will be on the same side as the handle.

Yellow tint is to show the effect of the lamination process. Please note 'white' will not be 'pure brilliant white'



Available Print Area(s):

- Bleed Boundary (Mug) = 245x139mm
- Max Print Area (Mug) = 236x132.5mm
- Text limit (Mug) = 231x126mm
- Bleed Boundary (DomedLid) = 44mm dia.
- Max Print Area (DomedLid) = 40mm dia.
- Text limit (DomedLid) = 36mm dia.

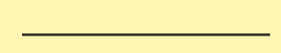
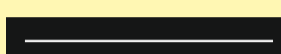


Notes For Artroom:

- If Artwork Contains a QR Code It Can Be No Larger Than 25x25mm
- To Step and Repeat Mug Artwork Onto Curved Guides = -182mm
- If The Order is Having Print To The Lid, Please Make Sure The Lid Artwork Is Placed On 'Artwork Layer - Lid'.

LE9575 - Americano Mug

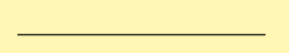
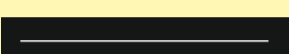


Product Dimension(mm): 95x150

Minimum Print Restrictions (Mug/Grip)

Line thickness (0.3mm)	
Reversed Line (0.3mm)	
Text (6pt)	
Reversed Text (10pt)	

Any lines or text below these restrictions will result in a loss of detail when printed

Minimum Print Restrictions (Lid/Wrap)

Line thickness (0.2mm)	
Reversed Line (0.2mm)	
Text (3pt)	
Reversed Text (4pt)	

Any lines or text below these restrictions will result in a loss of detail when printed

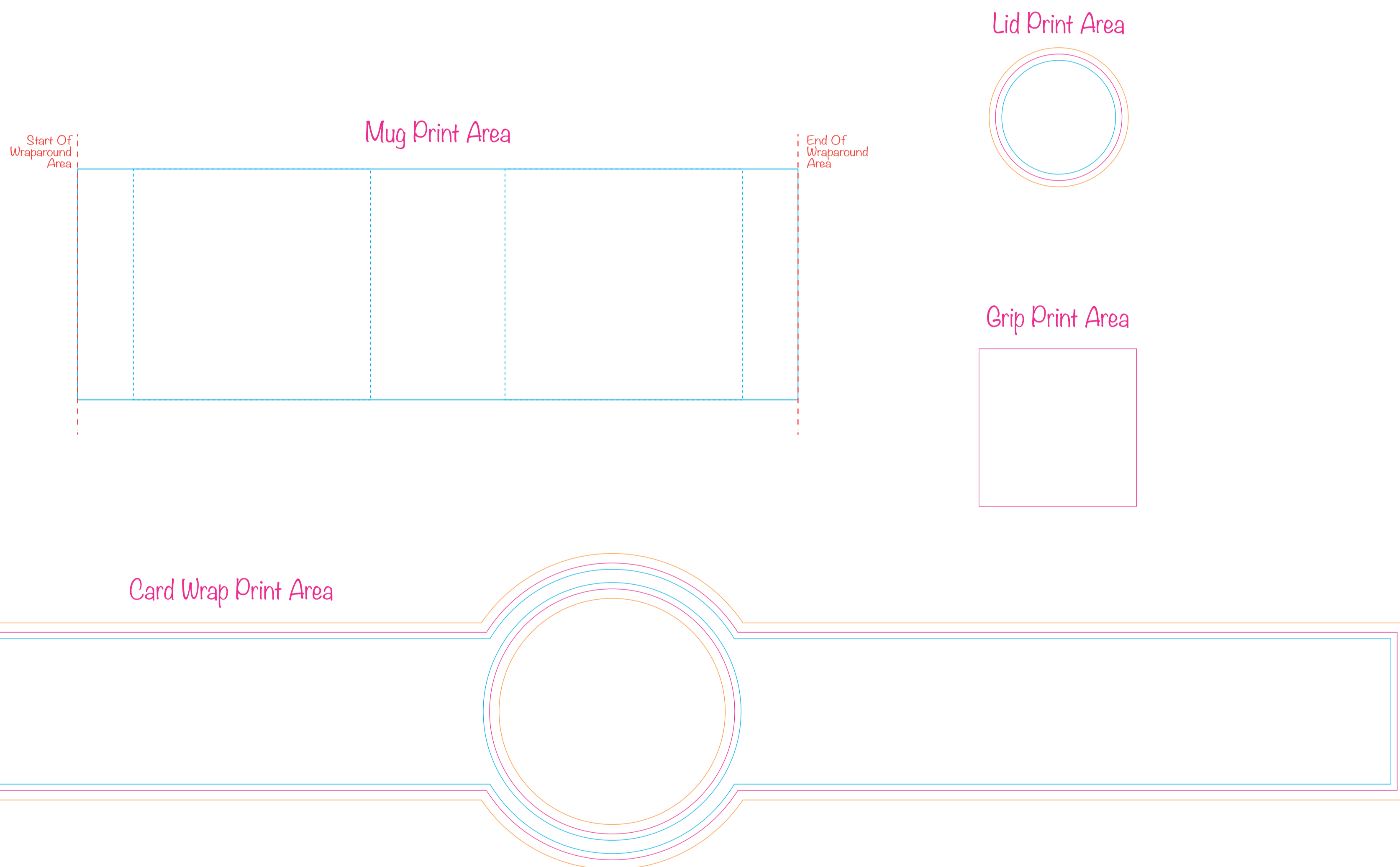
Actual Artwork Size(s):

Mug = -----
 Grip = -----
 Lid = -----
 CardWrap = -----

Please read carefully:

The drinking spout of the lid may be in different positions in relation to your artwork across your mug order.

Please be advised that a full wraparound print is not available on this mug, there will be a 5mm(minimum) gap before the start and after the end of the wraparound area.



Available Print Area(s):

- Wraparound-Mug = 228x73mm
- - - Nearside/Farside-Mug = 75x73mm
- - - Grip = 50x50mm
- Bleed Boundary (DomedLid) = 44mm dia.
- Max Print Area (DomedLid) = 40mm dia.
- Text Limit (DomedLid) = 36mm dia.
- Bleed Boundary (CardWrap) = 502x100mm
- Max Print Area (CardWrap) = 496x94mm
- Text Limit (CardWrap) = 492x90mm

Notes For Artroom:

- If Artwork Contains a QR Code It Can Be No Larger Than 25x25mm
- Only 1 Colour Print Is Available On The Grip
- IMPORTANT: Print colours available on the grip are:-
Black, White, Silver, Cool Grey 6, Orange 021, Yellow 123 Green 355, Red 485, Blue 300, Reflex Blue and Purple 266
- If The Order is Having Print To The Lid, Please Make Sure The Lid Artwork Is Placed On 'Artwork Layer - Lid'.